

# Measurement 2023 – Instructions for Authors

<sup>1</sup>Name Firstauthor, <sup>2</sup>Name Secondauthor

<sup>1</sup>Affiliation of Firstauthor, City, Country,

<sup>2</sup>Affiliation of Secondauthor, City, Country

Email: firstauthor@email.com

**Abstract.** *Organizing committee of the Measurement 2023 conference encourages authors to follow instructions described in this file to produce their manuscripts. Note that the length of contributed as well as invited papers for special sessions should not exceed 4 pages. Papers of keynote speakers can have up to 10 pages. The abstract should be suitable for use by abstracting services without rewording and should state concisely what was done and why, what was found, what was concluded, and the relevance. The length should not exceed 200 words.*

**Keywords:** *List 3-5 keywords, e.g. Body Sensors, Intelligent Textiles, Signal Filtering*

## 1. Introduction

The paper should be prepared in A4 format (210 x 297 mm) with 25 mm margins on all sides. Use the fonts and character sizes shown in Table 1 throughout the paper. Divide the manuscript into sections, i.e. Introduction, Subject and Methods, Results, Discussion, Conclusions, Acknowledgements and References as presented in this sample document. Number the headings. Other headings may be used for clarity as well. Further divide the sections into subsections (not numbered) if this clarifies the exposition of the work.

Note that you can format your paper using predefined styles prepared in this template paper.

### *Subheadings*

Subheadings may be used if necessary. Do not number subheadings.

## 2. Subject and Methods

This section describes the format for paragraphs, figures, tables, equations and references.

### *Paragraphs*

Use single line spacing in paragraphs; allow 6 points for space after each paragraph. Text in the paragraphs should be left and right justified, do not indent the first line in paragraphs.

### *Figures*

Figures can span the whole page width (see Fig. 1) or use a fraction of it. You should place the figures in appropriate locations within the manuscript. All figures should be captioned and numbered; references made in the text should use this number, like in Fig. 1.

Color figures will not be reproduced in printed conference proceedings. As a guideline, producing a greyscale copy of the color figure in a good copier can help in showing how the figure will reproduce in the printed version of the Proceedings. However, color figures will be reproduced in electronic version of the Proceedings accessible on the conference web page.

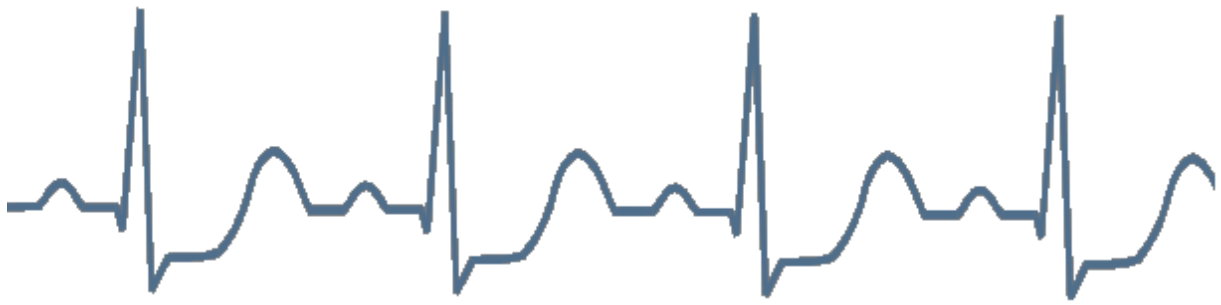


Fig. 1: Figure legends should contain enough information to understand the illustration without referring to the text, but should be concise. Use 10 pt Times New Roman font.

### Tables

Tables should be placed like figures. Number tables consecutively with Arabic numerals in order of their appearance in the text. Supply a short descriptive title for each table. Column headings should be brief and indicate units of measurement in square brackets. Refer to tables as Table 1, Table 2 and so on.

Table 1: Tables can span the whole page width or use a fraction of it, with the text flowing on the left-hand side. Use 9 pt Times New Roman Italic font.

Section	Font	Size [pt]	Format
Title	Times New Roman	14	Bold
Authors, Affiliation, Email	Times New Roman	13	Normal
Abstract and Keywords	Times New Roman	12	Italic
Headings and Subheadings	Times New Roman	12	Bold
Paper text, Acknowledgements, Appendix	Times New Roman	12	Normal
Formulas	Times New Roman	12	Italic
Captions of figures and tables	Times New Roman	10	Normal
Table text	Times New Roman	11	Normal
References	Times New Roman	12	Normal

### Equations

Number equations consecutively, with the number placed in parenthesis to the extreme right of the equation. Refer to equations as Eq. 1 except at the beginning of a sentence, when the word Equation should be spelled out. All symbols used in mathematical equations should be defined.

An example of formula is given here,

$$E = mc^2, \quad (1)$$

where

$E$  energy of particle at rest

$m$  mass of the particle

$c$  speed of light.

### *Format of References and Citations*

References are limited to pertinent published works or papers that have been accepted for publication. Results and findings not developed in the manuscript should be properly referenced, as in [1], [2], etc. References will be placed in the appropriate section at the end of the manuscript sorted taking account of the first appearance in the text. The style to be used is shown in the following paragraphs.

Journal articles: Last names and initials of each author. (year). Title of article - first word only capitalized, *Full Name of Journal Title in Italics*, volume (number): page-page.

Book References: Author(s) as above. (year). *Title of the Book in Italics - Main Words Capitalized*, Publisher.

For chapter in an edited book use the following style: Author(s) as above. (year). Title of article - first word only capitalized. In *Title of the Book in Italics - Main Words Capitalized*. Editor(s). Publisher, page-page.

Conference Proceedings: Last names and initials of each author. (year). Title of article - first word only capitalized. In *Proceedings of the Name of the Conference*. Publisher, page-page.

### **3. Results**

In this section clearly state results of the study or experiment.

### *Paper submission*

Measurement 2023 requires electronic submission of papers. Incomplete or incorrect submissions will be reported to the author and must be re-submitted to be considered for presentation and publishing. Papers must be submitted by uploading a file via the conference web page at [www.measurement.sk/M2023](http://www.measurement.sk/M2023) **not later than on March 10, 2023**. Follow instructions in the section „**Paper preparation**”. File should be in Microsoft Word (.doc or .docx) format or LaTeX. It is recommended that authors use as template this file provided at the conference the web page. Reception of papers will be automatically acknowledged.

### *Copyright*

All papers accepted for either oral or poster presentation will be published in the Conference Proceedings. Copyright of all published contributions is assigned to the Institute of Measurement Science, SAS. The Publisher will not refuse any reasonable request by the author for permission to reproduce any of his or her contributions to the Conference.

### **4. Discussion**

Discussion may also include conclusions.

### **5. Conclusions**

If conclusions are stated in a separate section, they should be clear and concise.

### **Acknowledgements**

The manuscript may include acknowledgements without numbering the heading.

### **Appendix**

Use Appendix only if necessary for clarity of the paper.

## References

- [1] Gordon, M., Thurdals, M. (2002). Repolarization changes displayed in surface ECG maps. A simulation study. *International Journal of Bioelectromagnetism*, 4 (5), 92–104.
- [2] Malmivuo, J., Plonsey, R. (1995). *Bioelectromagnetism: Principles and Application of Bioelectric and Biomagnetic Fields*. Oxford University Press.
- [3] Anderson, F.A. (1988). Impedance plethysmography. In *Encyclopedia of Medical Devices and Instrumentation*. John Wiley & Sons, 111–122.
- [4] Castor, G., Simon, J., Pilz, A., Niedermark, I., Klocke, R.K. (1992). The second derivation of the bioimpedance signal as index for successful systemic lysis of a coronary artery thrombus. In *14th Annual International Conference of the IEEE Engineering in Medicine and Biology Society*. IEEE, 1746–1747.